

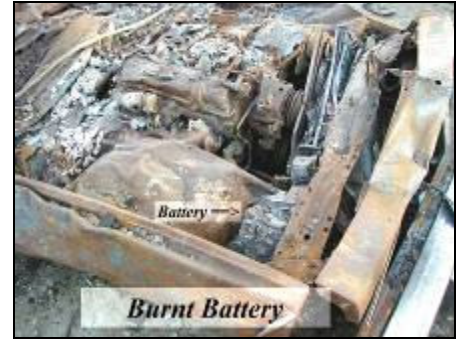
Vehicles



Prohibited: Lead-acid battery left in a vehicle



Prohibited: Lead-acid battery left in a vehicle



Prohibited: Lead-acid battery left in a vehicle



Prohibited: Lead-acid battery left in a vehicle



Prohibited: Mercury switch under hood



Prohibited: Mercury switch in trunk



Prohibited: ABS mercury-containing switch located on the chassis on the underside of vehicle



Prohibited: Un-punctured gas tank on vehicle



Prohibited: Un-punctured gas tank commingled with other scrap



Prohibited: Un-punctured gas tank



Prohibited: Un-punctured miscellaneous fuel tank



Prohibited: Propane bottles inside vehicles

Vehicles



Prohibited: Propane bottles and non-metallic materials inside trunk of crushed vehicle



Prohibited: Air-conditioning system containing CFC



Prohibited: Non-metallic materials inside vehicle



Prohibited: Non-metallic materials inside trunk of crushed vehicle



Prohibited: Non-metallic materials inside crushed vehicle



Prohibited: Non-metallic materials inside crushed vehicle



Prohibited: Non-metallic materials inside trunk of crushed vehicle



Prohibited: Non-metallic materials inside vehicle



Prohibited: Non-metallic materials inside crushed vehicle



Prohibited: Extra oversized tires



Prohibited: Excessive number of tires



Prohibited: Excessive number of tires

Vehicles



Acceptable: Gas tank on vehicle slit wide open prior to delivery to the facility



Acceptable: Gas tank on vehicle drained & punctured with two large holes at lowest points prior to delivery to the facility

IDENTIFICATION



Acceptable: Every vehicle must be marked with customer specific identification number and the letters "mfr" or "mf" on it



Acceptable: Every vehicle must be marked with customer specific identification number and the letters "mfr" or "mf" on it